

GET READY FOR

SUMMER



SKF

TECTRAN
Driven to be BETTER

NU-LINE

Dayton parts
DRIVEN BY DORMAN

HELIX

dINEX

ACE
Manufacturing Inc.

TRUX

FLEET ENGINEERS
A TRAMEC COMPANY

FEATURING:

- TRUCK ACCESSORIES
- FENDERS
- SAFETY LIGHTING
- CLEANING SUPPLIES
- DIESEL PARTICULATE FILTERS
- BRAKES

FROM
24⁹⁵

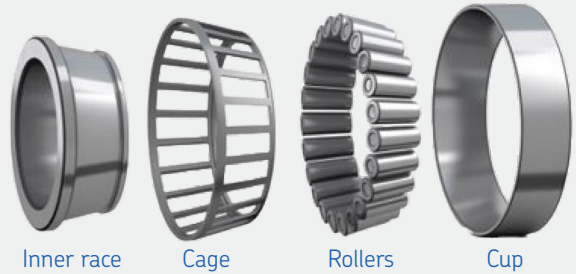
Tapered Bearing Sets

Features and Benefits

- Greatly reduce friction and increase load carrying capabilities
- Significantly increase reliability under heavy loads and misaligned conditions
- Precision engineering enables SKF tapered bearings to be easily adjusted on clearance or fit between the cup and cone assembly
- Helps prevent premature failure
- Increase truck and trailer uptime



NEW TO FGI



Inner race

Cage

Rollers

Cup

Drive		
580/572 SET401SKF		44.95
594A/592A SET403SKF		48.95
Steer		
3782/3720 SET406SKF		24.95
HM212049/212011 SET413SKF		35.95
Trailer		
HM218248/HM218210 SET414SKF		49.95
HM518445/518010 SET415SKF		58.95

HUB CAP



Trailer, Standard 1643 14.50
Steer, Standard 1612 29.95

FROM
14⁵⁰

SLEEVE NUT



M22-1.5 x 19.5mm SLN22195	23.95
M22-1.5 x 28mm SLN22280	24.95
M22-1.5 x 39.5mm SLN22395	25.95

FROM
23⁹⁵

FROM
42⁹⁵

CR Scotseal X-Treme Wheel Seals

Make the transition from the legendary CR Scotseal Plus XL to the CR Scotseal X-Treme

Drive		
47691XT		59.95
Steer		
35058XT		45.95
43761XT		59.95
Trailer		
46300XT		42.95
40129XT		44.95
42627XT		43.95



HNBXR OD

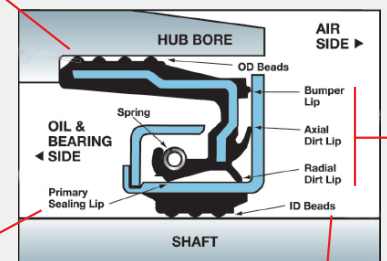
- Easy to install
- No tools required

Bumper, axial and radial dirt tips

- 3 dirt barriers keep out contaminants
- Bumper lip acts as a primary dirt excluder
- Added bearing protection

Unitized design

- 3 metal unitizer rings for damage free installation



Primary sealing lip

- Wavesal lip pumps oil back to the bearings for cooler operation and extended life
- Low friction design for increased and improved fuel economy
- Provides extreme heat resistance and broad compatibility with synthetic lubricants

EPDM ID

- Easy to install
- Perfect seal even on worn spindles
- Optimized sealing life under virtually all driving conditions

TECTRAN INFLEXION™ SERIES

NOW AT

FROM

130⁹⁵

**INFLEXION™ 7-WAY
ABS CABLES**



Coil, 12' 7ACM22.....	130.95
Coil, 15' 7ACM52.....	147.95
Coil, 15', 48" leads 7ACM54.....	174.95
Straight, 15' 7ASM15.....	132.95

FROM

152⁹⁵

**INFLEXION™ DUAL POLE
HORIZONTAL CABLES**



Coil, 12' 2HCM22.....	241.95
Coil, 15' 2HCM52.....	264.95
Straight, 12' 2HSM12.....	152.95
Straight, 15' 2HSM15.....	226.95

REDUCE THE RISK OF "BACK OF CAB" THERMAL EVENTS

THE OLD WAY (METAL/STANDARD):

- **Metal-to-Metal Arcing:** Risk of sparks and "Thermal Events"
- **Corrosion:** Metal plugs degrade in salt/weather
- **Cluttered Back of Cab:** Tangled lines lead to snagging and wear.

THE INFLEXION WAY (POLY/COMPOSITE)

- **Injection-Molded Safety:** Non-conductive housings prevent external arcing
- **Weather-Proof:** Poly/Composite resists chemicals and road salt
- **Streamlined 4-In-1:** All-in-one organized system reduces mechanical mess

**DOUBLE
TENDER KITS**

- /w APL clamps



16" /w TEC-Clamp® 99202.....	49.95
16" /w TEC-360 Clamp® 93202.....	54.95
25" /w TEC-360 Clamp® 93212.....	58.95

FROM

49⁹⁵

**AIRPOWER LINE
TEC CLAMPS**

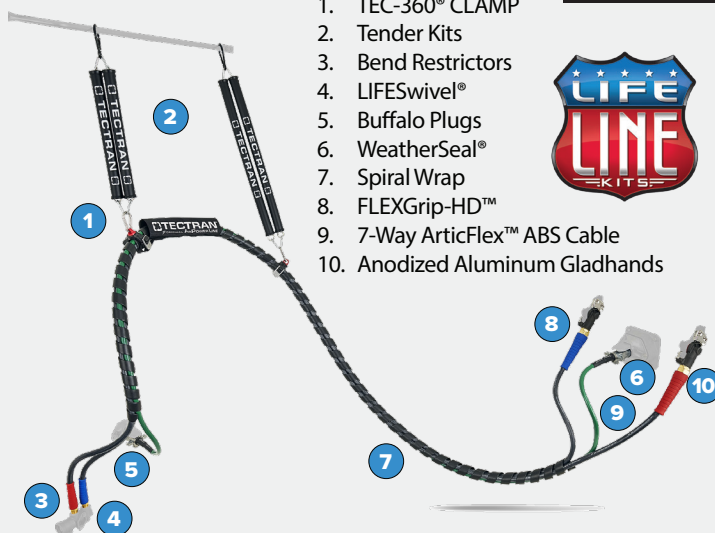


TEC-Clamp®, 3 hole 9888.....	8.95
TEC-360 Clamp®, 3 hole 9888ST360.....	14.95
TEC-Clamp®, Single 9890ST.....	21.95
TEC-360 Clamp®, Single 9890ST360.....	25.95

FROM

8⁹⁵

**3-IN-ONE AIRPOWER LINE
LIFELINE KITS**



1. TEC-360® CLAMP
2. Tender Kits
3. Bend Restrictors
4. LIFESwivel®
5. Buffalo Plugs
6. WeatherSeal®
7. Spiral Wrap
8. FLEXGrip-HD™
9. 7-Way ArticFlex™ ABS Cable
10. Anodized Aluminum Gladhands



12' LK12TR.....	402.95
13.5' LK135TR.....	419.95
15' LK15TR.....	362.95

FROM

362⁹⁵

4.5" LED WORK LIGHT, VALUE SERIES



FROM

21⁹⁵

Round, Spot TLEDVU1	31.95
Round, Flood TLEDVU2	29.95
Square, Spot TLEDVU3	31.95
Square, Flood TLEDVU4	21.95

PROJECTOR HEADLIGHT PETERBILT



FROM

547⁹⁵

389/388/367/597/589, Chrome, D/S TLEDH110	689.95
389/388/367/597/589, Chrome, P/S TLEDH111	689.95
389/388/367/597/589, Black, D/S TLEDH112	547.95
389/388/367/597/589, Black, P/S TLEDH113	547.95

DOUBLE ROW LED LIGHT BAR



FROM

160⁹⁵

22" TLEDU66	199.95
32" TLEDU67	160.95

S/T/T LIGHT



FROM

49⁹⁵

4" Round, Back Up TLED4X40	52.95
4" Round, Strobe TLED4X40AS	62.95
6" Oval, Back Up TLEDOX60R	49.95
6" Oval, Strobe TLEDOX60RAS	64.95

AXLE COVER KITS



FROM

43⁹⁵

33mm, Front THUBFRP33	43.95
33mm, Rear THUBRP33	62.95
33mm, Front, Pointed THUBFRP33P	79.95
33mm, Rear, Pointed THUBRP33P	99.95

AIR POWERED TRAIN HORNS



FROM

177⁹⁵

3 Bell, 130-135 db THORN1	177.95
4 Bell, 140-145 db THORN2	219.95

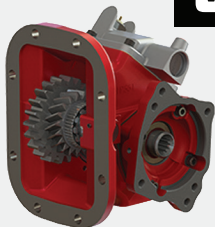


PTO

FROM

613⁹⁵

• 8 Bolt



HM589 Series HM589XLAHXV3XK	613.95
2000 Series HM2K8XCN772RA	640.95

HYFLOW AIR SHIFT DUMP PUMP

EACH

593⁹⁵



C102 series, LH Rot, 7/8 -13T **HC102LAS25**

HOIST VALVES

FROM

142⁹⁵



HM100C w/ 13" console HM100C13 ..	220.95
Combo w/ kickout HM103WK	142.95

NEW AT MAURICE WELDING

HELIX

SAFETY ESSENTIALS

**YOUR SAFETY
OUR PRIORITY**

OUR PRODUCTS:

- BEACONS**
- DIRECTIONALS**
- FULL LIGHT BARS**
- MINI LIGHT BARS**
- WORK LIGHTS**
- CAMERA SYSTEMS**
- ALARMS**

INDUSTRIAL LED BEACONS HBE3 SERIES

- Class 3
- Perm Mnt



Med profile **HBE3MPMA** **64.95**
High profile **HBE3HPMA** **89.95**

FROM

64⁹⁵

LED BEACON HBE2 SERIES

- Class 1
- Rechargeable Lithium Battery
- Wireless Magnet Mnt
- Remote control up to 100'



HBE2LREVMA

EACH

199⁹⁵

DIRECTIONAL LEDS HDR1 SERIES

- Class 1
- Surface Mnt
- Other colours available



3" x 1", Amber, 3 Diodes **HDR103A** **58.95**
4" x 1", Amber, 4 Diodes **HDR104A** **66.95**
5" x 1", Amber, 6 Diodes **HDR106A** **93.95**
5" x 1", Amber/Clear, 12 Diodes **HDR112AC** **111.95**

FROM

58⁹⁵

DIRECTIONAL LED STEALTH SERIES

- Class 1
- Other colours available



1" Micro Surface/Bracket Mnt **HDR604A** **98.95**
2.5", Super Slim, Surface Mnt **HDR505A** **113.95**

FROM

98⁹⁵

11" LOW PROFILE MICRO LED LIGHT BAR HML1 SERIES

- Class 1
- Surface Mnt
- Other colours available



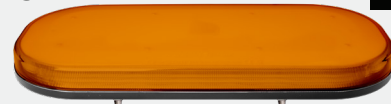
Amber, Perm Mnt **HML1PMA** **280.95**
Amber, Vac Mnt **HML1VMA** **303.95**
Amber/Clear, Perm Mnt **HML1PMCAC** **280.95**
Amber/Clear, Vac Mnt **HML1VMCAC** **303.95**

FROM

280⁹⁵

15" LOW PROFILE MINI LED LIGHT BAR HML2 SERIES

- Class 1
- Surface Mnt
- Other colours available



Amber, Perm Mnt **HML2PMA** **279.95**
Amber, Vac Mnt **HML2VMA** **397.95**
Amber/Clear, Perm Mnt **HML2PMCAC** **325.95**
Amber/Clear, Vac Mnt **HML2VMCAC** **397.95**

FROM

279⁹⁵

SINGLE AXLE FENDERS




FROM 151⁹⁵

Stainless, 18ga, Flanged, 4-Rib, 80"	N180SS1	290.95
Stainless, 16ga, Flanged, 4-Rib, 80"	NF180SS1	318.95
Aluminum, Flanged, 3-Rib, 66"	NF166A1	151.95
Aluminum, Flanged, 3-Rib, 66"	NF166A15	151.95*

*available at select locations

HALF TANDEM FENDERS



FROM 227⁹⁵

Stainless, 18ga, 4-Rib, 60"	N60SS1	227.95
Stainless, 18ga, 4-Rib, 66"	N66SS1	254.95
Aluminum, Flanged, 3-Rib, 144"	NF139A1	309.95
Aluminum, Flanged, 3-Rib, 144"	NF139A20	309.95*

*available at select locations

FULL TANDEM FENDERS



EACH 234⁹⁵

Aluminum, Flanged, 3-Rib, 108"	NF99A1
Aluminum, Flanged, 3-Rib, 108"	NF99A20*

*available at select locations

POLY SINGLE AXLE FENDER



EACH 142⁹⁵

Black Poly, Flanged, 76"	NF180PX1	142.95
Single Axle Mounting Kit	N180PMK	249.95

FULL POLY TANDEM FENDER



EACH 353⁹⁵

- 131"L x 26"W

NF13254PX1	353.95
-------------------------	---------------

POLY QUARTER FENDER KIT




EACH 123⁹⁵

- Top flaps & hardware included

24"L x 24"W	N1900KIT	123.95
-------------	-----------------------	---------------

STRAIGHT MUDFLAP HANGERS

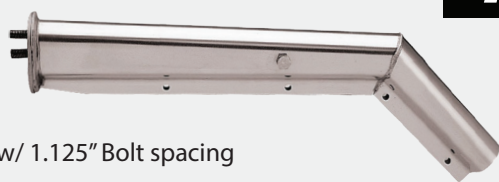


FROM 63⁹⁵

- 30" w/ 2.5" Bolt spacing

Painted Black	NF30P1	63.95/hanger
Chrome	NF30C1	102.95/hanger

ANGLED MUDFLAP HANGERS



FROM 75⁹⁵

- 27.5" w/ 1.125" Bolt spacing

Painted Black	NF37P1	75.95/hanger
Chrome	NF37C1	95.95/hanger

5-BAR MD ALUMINUM UNDERBODY BOXES

FROM 729⁹⁵



36" W x 18" D x 18" H	5BDD361818	729.95
36" W x 24" D x 24" H	5BDD362424	848.95
48" W x 18" D x 18" H	5BDD481818	833.95
48" W x 24" D x 24" H	5BDD482424	984.95
60" W x 18" D x 18" H	5BDD601818	980.95

X-F HYDRAULIC TANKS

FROM 1144⁹⁵



70 gallon w/mounting cradle	XFHT70	1464.95
35 gallon w/mounting cradle	XFHT35	1144.95*
50 gallon w/mounting cradle	XFHT50	1296.95*

*Special order only

ROUND DIAMOND GRIP STEP BOXES

FROM 739⁹⁵



All ACE boxes come standard with:

- Locking T-Handle latch
- Drip-resistant jamb
- Huck-bolted doors
- Stitch-welded internal seams
- Auto-grade bulb seal

12" W x 30" x 26"	SB12RNDCP	739.95
16" W x 30" x 26"	SB16RNDCP	795.95
18" W x 30" x 26"	SB18RNDCP	820.95

4' HEADACHE RACK

STARTING AT 1711⁹⁵



- 100% lightweight aluminum
- Full width chain tray
- 2 lockable chain hangers
- Additional options and customization available

HR110000

CLEANING SUPPLIES

SLICK MIST INTERIOR DETAILER



710 mL 20514.....11.95

SLICK MIST SPEED WAX



710 mL 20160.....12.95

SPRAY NINE® GLASS & STAINLESS STEEL CLEANER



600g Aerosol C23319.....7.95

SPRAY NINE® HD CLEANER



946 mL Bottle C268329.50
4L Jug C26804.....31.95

MR35 SALT ELIMINATOR



650 mL Bottle 11989.95
4L Jug 1199.....23.95
20L Pail 1200107.95

WASH 'N WAX



4L Jug 125617.95
20L Pail 125788.95

STREAKLESS GLASS CLEANER



350 mL Bottle 12614.95

ULTRA KLEEN HD CLEANER/DEGREASER



4L Jug 130722.95
20L Pail 1308101.95

LEATHER & VINYL VITALIZER



650 mL Bottle 12188.95

ENGINE KLEEN



454g Aerosol 8247.95

GLASS KLEEN



550g Aerosol 885.....5.95

WASH N' WAX



4L Jug 852.....32.95

BLUE SHOP TOWELS



55 sheets, Blue 75147.....5.25
60 sheets, HD Blue 32992.....6.95
200 sheets, Pop-Up Box 7519023.95

KITCHEN TOWELS



128 sheets, 1 Ply White 414824.25

CENTRE PULL TOWELS



500 sheets, 1 Ply White 0101016.95

TRUCK LEAF SPRINGS



FROM

289⁹⁵

Hendrickson HAS, Z 50389	466.95
Peterbilt, 2 Lf 75125	289.95
Peterbilt, Z 75163	460.95

TRAILER LEAF SPRINGS



FROM

138⁹⁵

3 Lf, Fruehauf, UAC79811 TRA697	205.95
4 Lf, Fruehauf TRA699	187.95
8 Lf, Reyco, T3564 TRA2270	319.95
3 Lf, Hutchens, 354-00 TRA2726	138.95
3 Lf, Hutchens, 355-00 TRA2727	153.95
3 Lf, Hutchens, 356-00 TRA2728	141.95
3 Lf, Hutchens, 365-00 TRA2740	159.95
3 Lf, Hutchens, 365-01 TRA2741	162.95

U-BOLT KITS - 3/4"



FROM

39⁹⁵

- 2 U-bolts
- 4 Washers
- 4 Units

3" x 12" 361469K	47.95
3" x 13" 361618K	39.95
5" x 12" 361705K	56.95
5" x 13" 361707K	49.95
5" x 14" 361706K	45.95

U-BOLT KITS - 7/8"



FROM

52⁹⁵

- 2 U-bolts
- 4 Washers
- 4 Units

3" x 12" 361248K	52.95
3" x 13" 361566K	56.95
3" x 14" 361374K	56.95
3" x 15" 361350K	68.95
5" x 12" 361258K	54.95
5" x 13" 361559K	56.95
5" x 14" 361252K	59.95
5" x 15" 361487K	56.95

ABS SENSORS

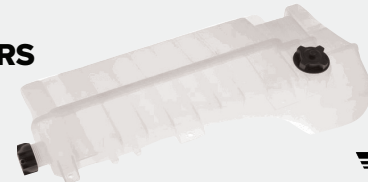


FROM

18⁵⁰

90 Deg, 0.04M, DIN 2 Pin ABS955335	18.50
90 Deg, 0.94M, DIN 2 Pin ABS955336	21.95
90 Deg, 1.64M, DIN 2 Pin ABS955341	22.95
90 Deg, 1.94M, DIN 2 Pin ABS955342	22.95
Extension, 3.03M, 90 Deg ABS130300	18.95

COOLANT RESERVOIRS



FROM

111⁹⁵

Paccar, '08-'24 6035403	231.95
Mack/Volvo, '08-'24 6035505	221.95
International LT625, '17-'19 6035124	327.95
Freightliner, '01-'15 6035201	111.95
Freightliner M2, '10-'19 6035207	214.95

WINDSHIELD WASHER FLUID RESERVOIR



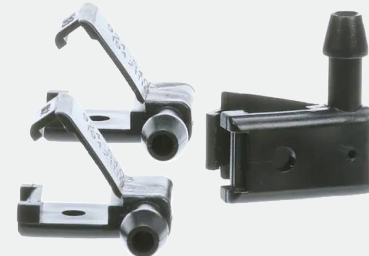
EACH

69⁹⁵

Paccar, '00-'23 6035402



WIPER NOZZLE KIT



EACH

12⁹⁵

Peterbilt, '87-'11 9245403



SUPER STOP AIR DISC BRAKE CALIPERS

SUPER STOP AIR DISC BRAKE CALIPERS PROVIDE OEM PERFORMANCE FOR COMMERCIAL TRUCKS & TRAILERS.

- New Outright Caliper
- Complete with Carrier
- No Core
- OEM Manufacturer

ADB22XLT, Trailer	SSCBEN22XLTD/PS	698.95
ADB22X Axial, Truck	SSCBEN22XADS/PS	698.95
ADB22X Vertical, Truck	SSCBEN22XVDS/PS	698.95
Wabco PAN22, Trailer	SSCWABHENP22DS/PS	698.95
Knorr SK7	SSCHOLSK7DS/PS	698.95
MAXX22T, Trailer	SSCHENMAX22TDS/PS	924.95



QUALITY, CONSISTENCY AND PERFORMANCE, EVERY STOP OF THE WAY!

FROM
112⁹⁵
SET

**AIR DISC
BRAKE
PAD SET**

Knorr SK7000; Bendix ADB22X	SSP1369	118.95
Haldex DB22LT	SSP1583	112.95
Wabco PAN22	SSP1777	125.95
MAXX22T	SSP1777H	146.95

FROM
246⁹⁵

ROTORS

Knorr SK7, PACCAR front	SSR922	246.95
Knorr SK7, ADB22X	SSR920	259.95
PAN 22, Trailer	SSR941	278.95
Haldex DB22/DB22LT	SSR950	328.95

FROM
58^{95*}
SET

**REMAN EXCHG
BOXED SHOE
KITS** Hardware Kit included

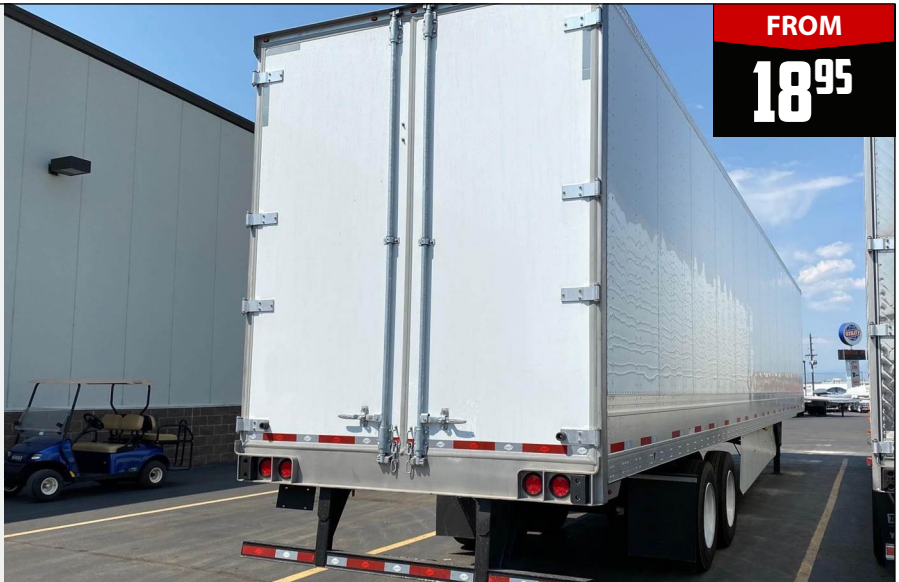
16.5" x 7" QPlus w/ HD7100 HD Lining	XSS714707QPK	58.95
16.5" x 7" Eaton ESII w/ HD7100 HD Lining	XSS714709E2K	62.95
16.5" x 8.62" QPlus	XSS504711QPK	72.95
16.5" x 6" QPlus Shoe	XSS504715QPK	87.95

*Plus core deposit or core

SWING DOOR HINGES



Great Dane, 3 hole w/ insert 02200407	26.95
Great Dane, 4 hole 02201009	21.95
Manac, 3 hole 02201041	29.95
Stoughton, 3 hole w/ collared insert 02201081	24.95
Utility, 3 hole 02201184	18.95
Vanguard, 3 hole 02201407	25.95
Wabash, 4 hole 02200975	21.95
Wabash, 4 hole w/collared insert 02201182	24.95



FROM
18⁹⁵

SWING DOOR LOCK ROD - MINER STYLE

EACH
108⁹⁵



Rod not included **02100312**

SWING DOOR HOLD-BACKS

FROM
4⁹⁵



Packaged Set of 4" Loop, Footman Loop & Hold-Back Hook **02100373****8.95**
Hook only **02200081**.....**4.95**

SWING DOOR DUEL-DUROMETER SEALS (BARNES)

FROM
27⁹⁵




• 168" Length

.5" 02201305	27.95
.75" 02201300	40.95
1" 02201301	43.95

SPARE TIRE CARRIER

EACH
226⁹⁵

- Up To 42" Diameter
- 18" Width



98400035

MUD FLAP HANGERS

FROM
20⁹⁵



- 5/8"
- Single

Straight, 30.25" 03400426	20.95
Angled, 27.81" 03400433	23.95
Angled, Triple Coil, LH 03400436	45.50
Angled, Triple Coil, RH 03400437	45.50

MUD FLAP MOUNTING BRACKET

EACH
22⁹⁵



Standard, 5/8", Kit **03100896**

SMARTRANGE DPFs

- clamps & gaskets included

Detroit Diesel, DD13, DD15, DD16	35007	1287.95
Detroit Diesel, DD13, DD15, E-Line	35039	1421.95
Detroit Diesel, DD13, DD15, DD16	35026	2525.95
Paccar MX11, MX13	58069	2661.95
Cummins X15, X12	58413	2049.95
Cummins ISB 6.7	58414	2040.95
Cummins/Paccar ISB 6.7, L9	58415	2530.95
Cummins ISB 6.7, L9	58416	2246.95
Cummins ISB 6.7	58417	2394.95

Cordierite Ceramics: Balances Performance & Price

For long-haul and steady driving conditions, the added soot capacity and heat resistance of premium Silicon-Carbide isn't needed. Choose Cordierite.



Save costs with proven, industry-standard ceramics.

FORTIS

SLACK ADJUSTERS



FROM

27⁹⁵

Bendix Style, 28 Spl, 5.5" Arm	FT043197	72.95
Meritor Style, 28 Spl, 5.5" Arm	FT801073	72.95
Meritor Style, 28 Spl, 6" Arm	FT801074	72.95
Gunitite Style, 28 Spl, 5.5" Arm	FT1140	72.95
Gunitite Style, 28 Spl, 6" Arm	FT1141	72.95
Haldex Style, 28 Spl, 5.5" Arm	FT10211	72.95
Haldex Style, 28 Spl, 6" Arm	FT10212	72.95
Haldex Style, 10 Spl, 6" Arm	FT10216	72.95
Haldex Style, SABA, 28 Spl, 5.5" Arm	FT20211	72.95
Haldex Style, SABA, 28 Spl, 6" Arm	FT20212	72.95
Manual, 10 Spl, 5.5"-6.5" Arm	FT47011	27.95

WHEELS

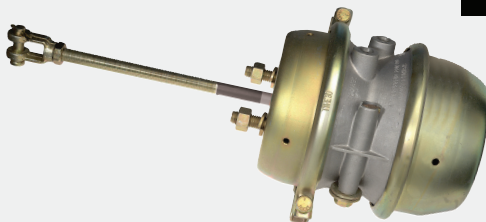


FROM

96⁹⁵

22.5" x 8.25", Polished Aluminum	FTAW225P	242.95
24.5" x 8.25", Polished Aluminum	FTAW245P	275.95
22.5" x 8.25", White Steel	FTSW225	96.95
24.5" x 8.25", White Steel	FTSW245	115.95

SPRING BRAKES



FROM

44⁹⁵

Type 30/30	FT3030	44.95
Type 30/30 Long Stroke	FT3030L	45.95

STRAPS



FROM

13²⁵

Flat Hook, 4" x 30'	FT423021	13.25
D-Ring, 4" x 30'	FT423010	16.95
Chain & Grab Hook, 3" x 30'	FT323040	21.95